

MODEL 6000
OWNER'S MANUAL

www.curbroller.com
785-467-3132

Congratulations on your purchase of the BATT Screed!

Curb Roller Manufacturing proudly manufactures the BATT Screed 6000 in the USA.

Before using the BATT Screed 6000 you must read and follow this instruction manual for proper use and set up. You also must read the DeWalt DCD460 manual.

⚠ WARNING

The use of this screed may be hazardous. The screed has rotating parts and lithium ion battery power.

⚠ WARNING

Make sure anyone using the Batt Screed 6000 understands the proper way to set up and operate the machine to avoid accidental injury. Before each use make sure the equipment has not been damaged or altered.

NOTICE

As with any laborious job do not operate the BATT Screed 6000 if you are too tired or if you have a medical condition that might be aggravated by strenuous work.

Minimal assembly is required for the BATT Screed 6000.

After removing packaging, inspect equipment for any damage that may have occurred during shipping. If any damage or defects are found please stop and take photos. Email photos to info@curbroller.com.

If you have safety concerns or questions that are not addressed in this manual please feel free to call us at 785-467-3132 or email at info@curbroller.com.

As the first battery powered roller screed on the market, the BATT Screed 6000 introduced the world to a new level of roller screed innovation and is the most versatile roller screed on the market. Curb Roller Mfg. constructed the BATT Screed 6000 with the basics in mind and it has been carefully designed to protect the battery and drill with an all steel housing for longer life and durability.

Engineering Improvements and Changes

NOTICE

Curb Roller Mfg. is constantly improving on product quality and effectiveness. As a result, engineering changes and

improvements will be made from time to time. Please note some changes or modifications may not be covered in this manual. If the operating characteristic or the appearance of your machine differs from those described in this manual, please contact Curb Roller Mfg. for questions or assistance.

Safety

⚠ WARNING

Always transport the BATT 6000 with the batteries removed from the drill to avoid any accidental rotation or power loss.

⚠ WARNING

Do not install battery until the drive unit is hooked up to the pipe insert and hands and fingers are away from the chuck and any moving parts.

⚠ WARNING

Make sure the second operator has a good hold on the opposing t-bar handle attached to the pipe.

⚠ WARNING

Make sure everyone around the pipe is aware the pipe is about to spin.

BATT Screed 6000 Package

This package includes:

- (1) Drive Unit
- (1) T-bar Assembly
- (2) Expandable Pipe Ends
- (2) DeWalt 12-Amp Hour Batteries
- (1) DeWalt FLEXVOLT Charger

*Pipe is sold separately. If buying from outside source, Curb Roller Mfg. recommends using aluminum pipe:

6061-T6 EXTRUDED PORTHOLE PIPE - ASTM B429 - 4" SCH 40 (4.500 OD X .237 W)



Set up and Operation

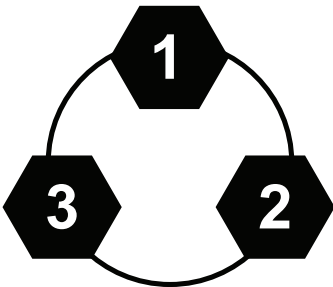
⚠ WARNING

Before each use charge all batteries and inspect all moving parts for concrete or other debris that may hinder smooth operation. Always replace or repair any part that has become damaged or is malfunctioning before operation.

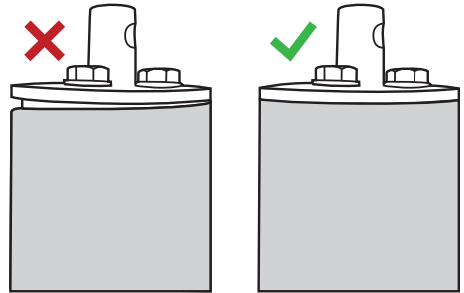
⚠ WARNING

Take proper safety precautions as you would with any other construction equipment.

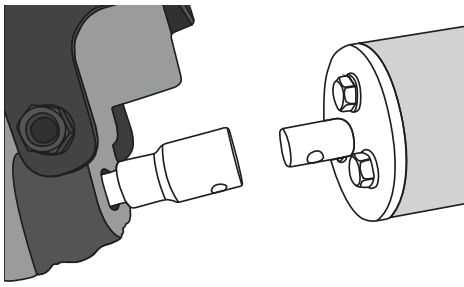
To install the expandable pipe inserts into the pipe you will need a $\frac{3}{4}$ " ratcheting socket, wrench, or preferably a battery impact. Push expandable insert into the end of the pipe until flange is tight against pipe end. Equally tighten the lug bolts on the expandable pipe inserts to ensure proper fitting into pipe.



Make sure the pipe ends have been cut true and are not angled. Ends not properly cut will cause excessive shaking and may cause damage to the drive unit. Use a factory cut end of the pipe whenever possible to install the drive end on. This will ensure against excessive wobble and shaking.



Once both ends are properly and securely installed in the pipe, the next step is to attach the drive end to the pipe. Make sure the battery is removed from the machine to protect the operator in case of accidental trigger activation. Lay the drive unit down next to the pipe and align the chuck to the expandable insert shaft. Push drive head all the way onto the shaft. Take one hand and roll the pipe forward until you can see down through the chuck and shaft hole. Once you have the two holes aligned install the lock pin. The drive end is now installed. Repeat this process with the T-bar assembly on the idle end.



After the tube has been attached to both handles, install the battery. With both operators holding firmly on the handles lightly pull the variable speed trigger to see which direction the pipe turns. The pipe should roll away from the operators for proper operation. If the pipe rolls towards the operators, simply change the rotation of the pipe by pushing the directional button on the side of the machine.

Cleanup and Maintenance

Excessive wet concrete may be removed with a rag, wire, or bristle brush.

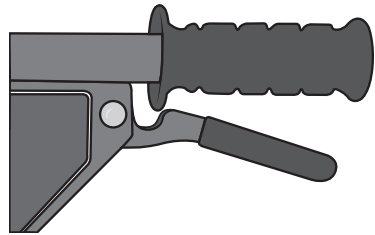
Dry concrete may be gently removed using a scraper or similar tool.

Curb Roller Mfg. recommends removing the expandable pipe inserts after each pour and storing them in the non-compressed position. It is also recommended to remove the bolts from the ends and re-apply a coat of anti-seize on them at least once a year.

Troubleshooting

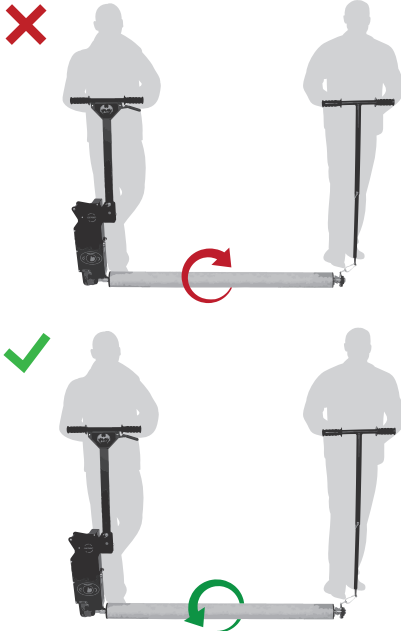
Trigger Sticks

Check bolt on handle and loosen nylon nut if necessary.



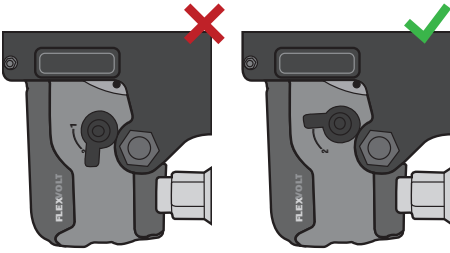
Check slide for concrete build up.

Linkage may be bent and binding.



Short Battery Life

Keep from running the machine in high gear all the time.



Low slump concrete or sand.

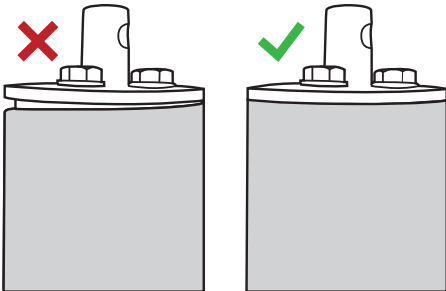
Prevent excessive concrete in front of roller.

Old, defective, or not properly charged battery.

Excessive Shaking or Pipe Jumping

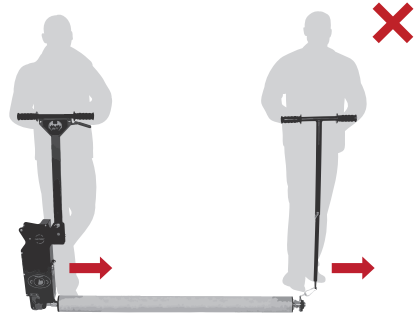
Check to see if pipe is bent.

Check if the drive end of pipe is cut off at an angle.



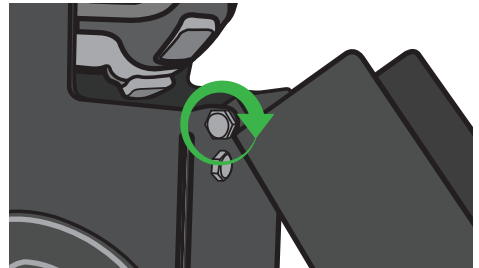
Verify the pipe insert is installed properly and not at an angle.

Avoid abrupt or excessive movement of the drive unit to reposition pipe location.



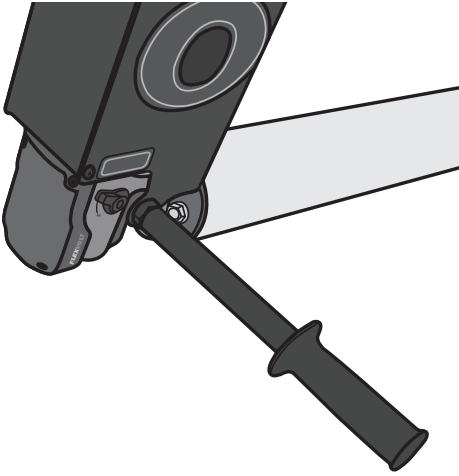
Access Door Won't Stay Shut

Tighten door bolt.

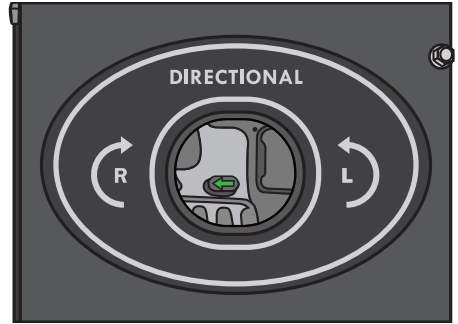


Drive End Falls in Concrete / Won't Stand

Install the handle/kickstand supplied with screed in opposing mounting nut.



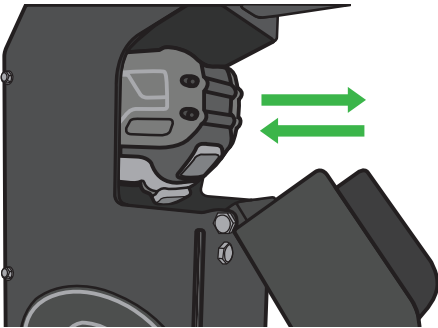
Check directional button and make sure it is depressed all the way in.



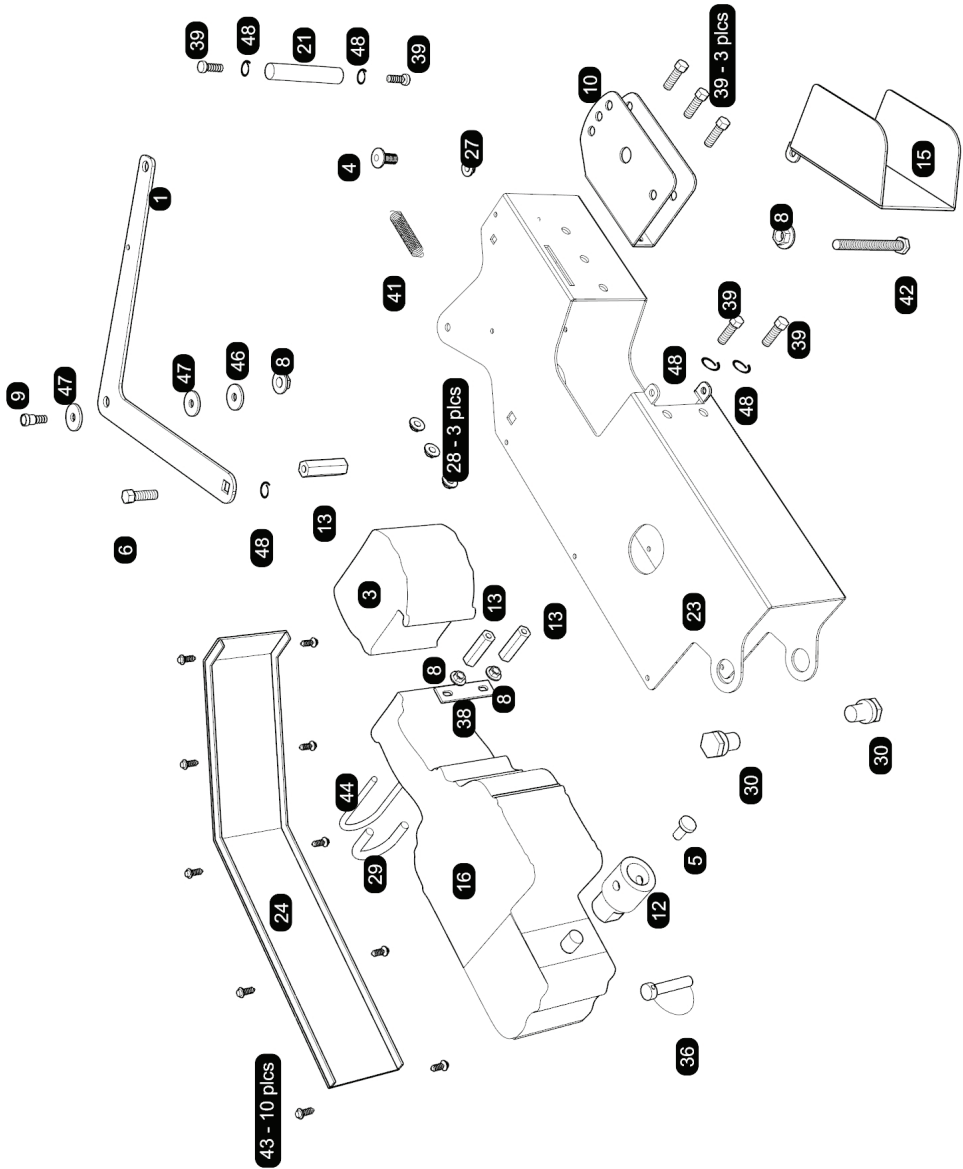
Nothing Happens When Trigger is Pulled

Check battery life by pressing indicator button.

Remove battery and reinsert.

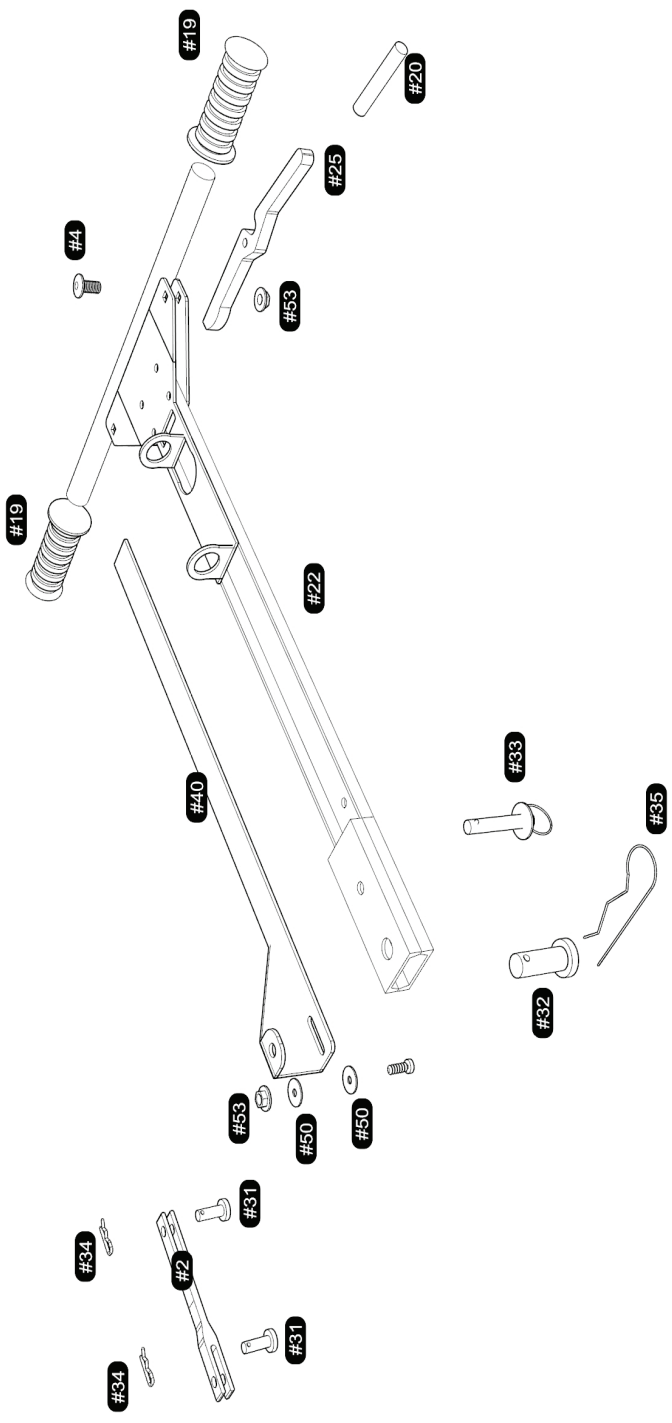


Check all linkage for proper activation of drill trigger.



Parts

No.	Qty.	Description	Part No.
1	1	Arm - Pivot	60003-001
2	1	Arm-Link, Speed Control	60005-001
3	2	Battery - DeWALT 12 Amp Hour	1500-105
4	2	Bolt - Carraige 1/4"x1.25	253-005
5	1	Screw-SHC, 1/4"-20 Unc x 1" Lg, Blk Oxide	153-076
6	4	Bolt - Carriage 5/16"x1"	313-004
7	6	Bolt - Hex 1/2x5"	501-520
8	4	Nut-Nylock, 5/16"-18 Unc, Zc Pltd	119-108
9	1	Bolt-Shldr, Allen, 3/8" OD x 1/2" Lg, 1/4"-20 Thd, Blk Oxide	155-086
10	2	Bushing - Rubber	1203-003
11	1	Bracket - Position	60004-001
12	1	Chuck	60012-001
13	3	Coupler - 5/16 Threaded Coupler	315-105
14	1	Coupler, Static End	60015-001
15	1	Door - Access	60002-001
16	1	Drill - DeWALT	1500-001
17	2	Flange - Rtnng, Inside (MS)	60014-001
18	2	Flange - Rtnng, Outside (SS)	60018-003
19	4	Grip - Rubber, Handle	1143-001
20	1	Grip - Rubber, Lever	1143-001
21	1	Handle - Lift	60010-001
22	1	Handle Wdmt - Control	60009-001
23	1	Housing - Front	60000-001
24	1	Housing - Rear	60001-001
25	1	Lever - Control, Speed	60008-001
26	1	Link-Snap, 3/8"	1003-024
27	1	Nut - Flange 1/4	105-101
28	6	Nut - Flange 5/16	105-102
29	1	Tubing-Vinyl, Clear, 1/2" OD x 3/8" ID	1135-001
30	2	Nut-Mounting, Dewalt, Replacment	60016-001
31	2	Pin - Clevis 5/16x0.5"	1001-322
32	1	Pin - Clevis 5/8x1.5"	1001-351



Parts

No.	Qty.	Description	Part No.
33	1	Pin - Detent 3/8x1.5	1001-005
34	2	Pin - Hair .08x1	1001-511
35	1	Pin - Hair .125x3	1001-517
36	3	Pin-Lock, Rd Dbl Wire 3/8	1001-107
37	1	Plate - Pull, Static End	60011-001
38	1	Plate-Rtng, U-Bolt (Replacement)	60017-001
39	7	Bolt-HCS, 5/16"-18 Unc x 3/4" Lg, Zc Pltd	313-003
40	1	Slide	60006-001
41	1	Spring - Tension 0.5x2.5	1007-001
42	1	Bolt-HCS, 5/16"-18 Unc x 3-1/2" Lg, Zc Pltd	313-014
43	10	Tap - Self Tappers # 10	151-019
44	1	Ubolt-Rd, 5/16"-18 Unc, 1-3/4" W x 3-1/2" L, Zc Pltd	315-005
45	6	Washer - Flat 1/2	102-010
46	2	Washer - Flat 5/16	101-108
47	2	WSHR-FLT, NYLON 3/8", 0.375" ID x 1.25" OD x 0.125" THK	101-527
48	5	Washer - Lock 5/16	103-108
49	1	Bolt-Shldr, Allen, 5/16" OD x 3/8" Lg,1/4"-20 Thd, Blk Oxide	155-064
50	2	Washer, Nylon 5/16x.88x.06	101-522
51	1	Washer-Flat,1/4", SAE, Zc Pltd	101-107
52	1	Link-Quick, 1/4", Zc Pltd	1003-003
53	2	Nut-Nylon Hx, 1/4"-20, G2, UNC, ZC Pltd	119-107
54	1	Bearing, 3 Bolt Flange	1147-001
55	1	Charger - DeWALT, 20V, Fan Cooled	1500-051
56	1	Decal Kit - BS6000	19000-005
57	3	Serial Number	19001-503
58	1	Handle Wdmt -"T", Upper	60020-001
59	1	Handle Wdmt -"T", Lower	60020-003
60	1	Decal: "Batt" Handle Emblem	19000-501
61	1	Decal: "Tortoise/Hare"	19000-502
62	1	Decal: "Danger" (2-1/2" x 3-1/2")	19000-503
63	1	Decal: "Flag" (W/ USA Ribbon)	19000-504
64	2	Decal: "R/L Directional Oval"	19000-505

Parts

No.	Qty.	Description	Part No.
65	1	Manual	19001-501
66	1	4" Sch 40 Aluminum Pipe	061-113
67	1	Kickstand	60021-001

Batt Screed 6000 Warranty

Curb Roller Manufacturing warrants to the original purchaser that this product will be free from defects in material and workmanship.

Curb Roller Manufacturing agrees to repair or replace, at the manufacturer's discretion, any defective product free of charge within the warranty time period.

Curb Roller Manufacturing must authorize all work and returns prior to any work being performed or returns made. If the customer does perform work and makes a return without authorization, the customer does so with the understanding that Curb Roller Manufacturing or any of its agents shall not be obligated for the cost of any such unauthorized expenses or actions.

Proof of purchase in the form of your dated sales receipt showing serial number and the model of the product will be required before our dealers can perform warranty service on the product.

The purchaser of any goods covered by this warranty understands and agrees that the sole and exclusive remedy against Curb Roller Manufacturing shall be for the replacement or repair of defective goods as provided herein.

Warranty questions or service information can be obtained from your dealer or by contacting Curb Roller Manufacturing at 785-467-3132.

Machine warranted for a period of one (1) year after date of original purchase to original purchaser.

Batteries warranted for a period of three (3) years after date of original purchase to original purchaser.

Please visit www.curbroller.com to register your product.



Curb Roller Mfg., 112 South Main Street, Fairview, KS 66425

Patent Pending
(May 2019)